

# MONROVIA ROCKHOUNDS

## AUGUST 2016 NEWSLETTER

### BOARD OF DIRECTORS

**PRESIDENT:** Jo Anna Ritchey

**VICE**

**PRESIDENT:** Thomas Witt



**TREASURER:** Jim Lloyd

**SECRETARY:** Coleen Chestnut



### A WORD FROM THE PREZ

I went to the MSSC Picnic on Sunday 8/21/2016. As to be expected, all had wonderful time. The silent auction looked like a success, but I left before all was counted and paid for. I came home with 2 lapis sphere (smallish at 2") but very pretty. It was fun talking to the people at my table. Next Sunday I plan to go to UCLA for the Meteorite Museum and a talk about Should be fascinating.

I want to take the opportunity to thank Thomas Witt for taking over the job o Bulletin Editor. This is a position full of rewards and a bit of a pain. The rewards include knowing what is going on in the Club. All news passes through the Bulletin Editor. The pain usually comes from trying to get reports time and sufficient content for a bulletin. I think he will find the effort worth while.

Start thinking about the MAFA Show being help on Oct. 29-30, 2016. It is a 2 day show, Saturday & Sunday. We will need people to man the booth, Our booth will include the Treasury Wheel, Grab Bags and a Rock Store. We will also have fliers to hand out to people. Should be lots of fun. Be sure to save the date.

Jo Anna Richey

**Mission Statement :** Our Purpose is to promote popular interest and education in the earth sciences, including geology, mineralogy, paleontology, the lapidary arts, and related subjects; to sponsor and provide means of coordinating the work and efforts of persons and groups with similar interests; and by and through such means to strive toward greater community and international good will and fellow-ship. We also support promoting and ensuring the right of amateur hobby collecting, recreational rock hunting and the use of public and private lands for educational and recreational purposes related to the earth sciences. We are a registered 501 C 3 education non profit organization.

**Affiliations & Accreditations:** The Monrovia Rockhounds is affiliated with the California Federation of Mineralogical Societies, Inc. (CFMS), the American Federation of Mineralogical Societies (AFMS), and the American Lands Access Association (ALAA).

**Membership:** Dues are \$20.00 per member per year due by April 1st and \$10.00 per each additional member at the same address. Initiation Fee is \$10.00 per name per new member and includes membership packet and MOROK name badge.

**Meetings:** Meetings are held on the 3rd Thursday of each month. at 7:00 pm, in the basement of the United Methodist Church of Monrovia, located at 140 E. Palm Ave. Monrovia CA 91016. The building is on the corner of Ivy & Palm Ave. We use the door where there is handicapped access in the alley on the west side of the building. Do not try to enter from the front of the building. Guests are al-ways welcome at our General Meetings. Please come and share our love of rocks.

**Information:** Monrovia Rock Hounds Inc. was founded August 28th, 1957. The club colors are green & white. The club is a non-profit organization dedicated to providing knowledge of the lapidary arts, geology, mineral logy, and other related fields. Members enjoy slide shows, lectures, demonstrations, displays, lapidary classes, as well as field trips for exploration, study and collecting specimens.

**Newsletter:** We reserve the right to edit all material submitted for publication. If you have any submissions for this newsletter or need to contact the editor Thomas Witt (760) 552-2404.

**The August 2, 2016 Board Meeting**  
of the Monrovia Rock Club was called to  
order at 2:02PM at the Ritchey's home in  
Monrovia.

**Officers present: Jo Anna Ritchey, President,  
Thomas Witt, Vice President,  
Jim Lloyd, Treasurer and  
Colleen Chestnut, Secretary.**

**VP, Thomas Witt** said the speakers for the August  
18th meeting will be Alan and Claudia Heller  
doing a program on Curiosities of the California  
Desert.

It was suggested that Jurupa be contacted for  
speakers for future meetings.

Jo Anna told us that Bruce Carter will host the  
MSSC picnic/potluck and silent auction  
on Sunday, August 21st. from 12:00PM until  
4:30PM at his home in Monrovia.

MSSC will provide beef brisket and pulled pork.

Guests should bring a potluck dish to share.

**Treasurer, Jim** says we have 25 paid members.

**Field Trips** to museums and to UCLA to hear Alan  
Rubin speak on Comets were discussed.  
MAFA and March Rock Shows--no new  
information

CFMS Show--Jo Anna will confirm that Victor  
Castellano will attend September 15-18.

Jo Anna sent a E-mail to Judi Romine regarding  
bulletin.

The meeting was adjourned at 3:05PM  
Colleen Chestnut  
Secretary

## Rockhound hard at Work!



## Wire Wrapping Tumbled Stones



Intro: Wire wrapped stone pendants. I really  
love gemstones, so what better to do than  
make a pendant with them! ... First thing you  
need is tools

Step 1: Materials. Make your choice of wire

Step 2: Start with a swirl. ...

Step 3: Getting the stone in. ...

Step 4: Wrapping the bottom. ...

Step 5: The top needs wire as well. ...

Step 6: A loop to finish it. ...

Step 7: Done!

## Rock Hound



**September 16 - 18  
PLACERVILLE, CA  
77th CFMS Show &  
Convention Center**

Hosted by El Dorado County  
Mineral & Gem Society  
El Dorado County Fairgrounds  
100 Placerville Drive

Hours: Fri - Sun 10 - 5 daily

Contact: Barbara Terrill

530 676-2375

## Lake McDonald, Glacier National Park



### SEPTEMBER BIRTHSTONE

**Sapphire**, the birthstone of September, is most desired in its pure, rich blue color but is present in almost every color including pink, purple, yellow and green. In the Middle Ages the gem was believed to protect those close to you from harm and also represented loyalty and trust.



### VP Report

Well here we are approaching the end of summer. We have had some pretty warm weather and the fire season is still upon us. There have been a few wild land fires that have been exceptionally disastrous. The most recent in our area the Blue Cut Fire in the San Bernardino National Forest that burned north into the desert. It has proved to be very devastating.

Our August meeting turned out to be a very good meeting. Our guest speakers Alan and Claudia Heller from the Duarte Historical Society presented their program "Curiosities of the California Desert" Alan delivered a lot of information on sights to see in the upper and lower deserts. The Desert View Tower on Interstate 8 in western Imperial County. The Landers Sound Bath, literally sounds like a cool place to check out. Alan told us of his story about diving into Devils Hole in Death Valley with two Park Rangers, where he took photographs for the first time of the Devil Pup Fish an endangered species.



**The August 18, 2016 General Meeting of the Monrovia Rock Club** was called to order at 8:30 PM. After our program on "Curiosities of the Mojave Desert" and refreshments.

**Officers present were:** Jo Anna Ritchey, president, Thomas Witt, vice president, Jim Lloyd, treasurer, Colleen Chestnut, secretary.

Thomas and Jo Anna gave information regarding the field trip to the Meteorite Museum and the lecture on comets by Alan Rubin on Sunday, August 28th.

Details about the MSSC picnic at Bruce Carter's house on Sunday, August 21st were given and members and guests were encouraged to RSVP and attend.

**Treasurer,** Jim said we have 25 paid members

**Fellowship:** Linda and Kevin Doran had a nice trip and visit to Ireland but now have bad colds so were not present. We had 6 members present and 10 guests.

Jo Anna welcomed the guests and told them about our activities and offered membership applications. Thomas offered to e-mail the bulletin to the guests.

**Bulletin Editor:** Judi Romine has resigned as bulletin editor. Thomas Witt did the August Bulletin.

**CFMS Show:** Jo Anna will confirm that club representative, Victor Castellano will attend the show September 15-18, 2016 in Placerville.

**MAFA:** It is the last weekend of October 29th and 30th. The Rock Club will have a booth.

**Audit:** Jo Anna will check with Kevin Doran to see if he has finished the audit of the books.

The meeting was adjourned at 8:47PM

Colleen Chestnut  
Secretary

### **Opalized Wood Occurrence in the Eocene Formation of East Roseville**

Between 35 and 50 Million years ago during the Eocene Period the site of East Roseville was a deltaic environment. Ancestral drainage from the American River and other small tributaries contributed large amounts of sediment and organic debris to an embayment where large trees were buried in quartz-rich sands.

The geology of this area was recently exposed during excavation for a construction project and many opalized logs were found and carefully excavated. Well preserved sedimentary structures were identified and mapped and the opalized logs were found to be oriented in a downstream direction. One of the largest opalized trees was identified as a Laurel tree and measured over 50 feet in length and 3 feet in diameter.

Come hear our very own Michael Hunerlach as he speaks to us about Roseville's petrified wood. He spent most of his career as a Research Geologist with the US Geological Survey and the last 8 years as a mining geologist with the US Forest Service prior to retiring in December of last year. He has been a "rockhound" for more than 40 years, having started with the Carmichael Gem & Mineral Society in the mid 60's. As a 5th generation native Californian he has a strong interest in local geologic history.

Matthew Stanley  
Roclin Rock Rollers Gem & Mineral Society  
Volume 57, Issue 6 – June 2016



## August 18, 2016 General Meeting

**Officers present:** Jo Anna Ritchey, president, Thomas Witt, VP, Jim Lloyd, Treasurer, Colleen Chestnut, Secretary.

**Programs:** Thomas Witt, VP announced tonight's program Alan and Claudia Heller from the Duarte Historical Society, gave their presentation of "Curiosities of the California Desert". This was a very good program and very informative. With lots of information to share. They also had their three books on sale for \$20 each.

**Treasurer:** Jim Lloyd reported 25 paid members

**Fellowship:** 6 members and 9 Guest.

**Show Chairman:** Jo Anna has reserved Ayres Hall for the March 2017 show.

**Federation Director:** Jo Anna said that CFMS Show in Placerville from September 15-18, 2016. If anyone is going they should make arrangements.

**Bulletin Editor:** Thomas Witt will be the new acting editor until such time someone else would like to take the position.

**New Business:**

**Silent Auction is coming up in October, donation items will be needed for the auction**

**Picnic:** MSSC will have their Picnic on Saturday August 20 at Dr. Bruce Carters Home in Monrovia. All are invited

**Refreshments:** Thomas Witt and Jo Anna Ritchey  
Colleen Chestnut, Secretary

## WEST COAST GEM & MINERAL SHOW

NOV. 11 - 13, 2016

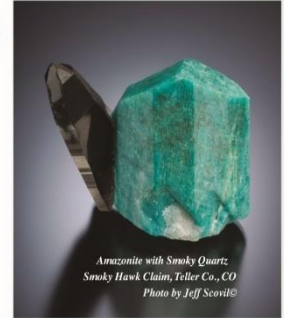
SANTA ANA, CA

Holiday Inn - Orange County Airport  
2726 S. Grand Ave.

(55 Freeway exit 8 for Dyer Rd. to S. Grand Ave.)

80 Great Dealers

Minerals ★ Fossils ★ Gemstones  
Jewelry ★ Beads ★ Decorator Pieces  
Meteorites ★ Lapidary ★ Metaphysical



Amazonite with Smoky Quartz  
Smoky Hawk Claim, Teller Co., CO  
Photo by Jeff Scovill

FREE Admission ★ FREE Parking ★ Retail  
Wholesale For Qualified Buyers

Show Hours: Fri. & Sat. 10 - 6 ★ Sun. 10 - 5

LLD Productions, Inc., P.O. Box 665, Bernalillo, NM 87004, Fax: (303) 223-3478, [mzexp@ms.com](mailto:mzexp@ms.com)  
[www.mzexp.com](http://www.mzexp.com) [facebook.com/mzexp](https://www.facebook.com/mzexp)

When the weather is a little more cooperative. Let's get out in the desert and collect some rocks? Lets plan a field trip to Black Mountain near Hinkley. We could be going to collect a rhyolite with circular patterns called "bubblegum rhyolite". Some pieces contain agate and opalite. We can work out the details at a meeting.

## Field Trip Ideas

UCLA Meteorite Museum

Lavic Siding, and the Jasper  
Fields.



## September Birthdays

Rex Chambers 9/21

Janie Duncan 9/9

Ralph Fregoso 9/18

Harold Vannatta 9/12



## Upcoming Events

Hi-Desert Rockhounds – 41st Annual Gem & Mineral Show  
Wed thru Sun, September 28 – October 2, 2016 JOSHUA TREE, CA  
Sponsor: Hi-Desert Rockhounds/JT Sportsman's Club

Venue: Sportsman's Club

6225 Sunburst St., Joshua Tree, CA 92252

Hours: Wed noon – 6:00pm; Thu thru Sun 9:00am – 5:00pm

Admission and Parking: Free.

Saturday night Vendor's dinner & Silent Auction: one ticket \$15 or two tickets for \$25.

Contact: 760-366-2915

Sat and Sun, Oct 1–2, 2016 BORON, CA – Mojave Mineralogical Society Annual Show

Venue: Boron Recreation Park

26998 John St., Boron, CA 93516

Hours: Sat 9:00am – 5:00pm, Sun 9:00am – 4:00pm.

Admission & Parking: Free

Contact: Bruce Davies, 760-338-8829

Sat and Sun, Oct 1–2, 2016 VISTA, CA – Vista Gem & Mineral Society Annual Show

Venue: Antique Gas & Steam Engine Museum

2040 N. Santa Fe Ave., Vista, CA 92083

Hours: Sat 10:00am–5:00pm, Sun 10:00am–4:00pm

Admission & Parking: Free

Contact: Ray Pearce, 760-726-7570

Sat and Sun, October 15–16, 2016 WHITTIER, CA – Whittier Gem & Mineral Society  
Annual Show

Venue: Whittier Community Center

7630 Washington Ave., Whittier, CA 90606 (corner of Mar Vista and Washington)

Hours: 10:00am – 5:00pm

Admission and Parking: Free.

Contact: Frank Winn, 626-239-5457

## Beginner Jewelry Making Tools

A Jeweler's Saw is one of the fundamental tools in jewelry making. If you had a list of items to bring with you, should you be stranded on a desert island, a jeweler's saw would be the first item!

Saw blades are available for the thickness of the metal you are sawing and there is a choice of at least 13 different sizes, with blades for thick stock with not that many teeth to very thin stock with quite a lot of teeth - and all these blades fit into the same sawing frame.

At a workshop, you will learn to insert a blade to get the correct tension, saw smoothly with a lubricant, saw straight, curved, zig zag and wavy lines. And try piercing for when you need metal sawed out in the middle of a sheet. (copper and brass sheet and saw blades.)

A bench pin with clamp and a saw frame can be ordered ahead of time from any number of jewelry equipment and supply companies for somewhere around \$20.00.



## Hunting for Meteorites

### How to Find Them

Text and photos By Dale Lowdermilk

How many times have you wished that you could find a way to make a little money from your 4-wheeling weekend, dirt bike, metal detector, or just walkin' across one of California's desolate dry lakes? Well, if you're observant, persistent and a little bit lucky, there may be some bucks waiting out there in the boondocks, just under your nose...and literally right out of the blue. During the past five years, there has been a rapidly increasing demand from universities and planetary scientists for freshly fallen meteorite material. The result has been an increasing cost to acquire rocks from space, which translates into big bucks for those little shooting stars you see at night. If you know what to look for, they can, literally, become dollars from heaven. (How ever, there are some rules to follow if they are found on BLM Land.)



A crater near Winslow, Arizona.



THE MOROKS NEWSLETTER is the official monthly bulletin published by the Monrovia Rockhounds Club and is distributed free of charge electronically to members and non-members or by mail to the members without email. Views expressed by authors in the articles appearing in THE NEWSLETTER do not necessarily reflect those of the Monrovia Rockhounds Club. The editor publishes content as presented with minor changes for continuity. Articles from this publication may be reproduced in whole or part in other lapidary newsletters if proper credit is given to the author and THE NEWSLETTER. Articles and pictures are due by the 25th of each month for the following months publication.

## UPCOMING MEETINGS:

### BOARD MEETING TUESDAY, SEPTEMBER 6, 2016

2:00 pm at the Ritchey's  
224 Oaks Ave  
Monrovia, CA 91016  
All members welcome

### GENERAL MEETING THURSDAY, SEPTEMBER 15, 2016

7:00 pm United Methodist Church  
Basement



JOIN US  
AT  
FACEBOOK

**Monrovia Rockhounds Inc**  
**Gems of the Foothills**  
224 Oaks Ave  
Monrovia, CA 91016



First Class Mail